



Building Private Networks with RECOL DSL Contexts
by Jacob Epstein, CTO
November 1, 2004

With the evolution of the Internet and supporting technologies, organizations are looking towards broadband networks to link remote office and home users.

A challenge has been privacy and security especially when sensitive information such as Electronic Personal Health Information (EPHI) or corporate financial information and intellectual property is being shared.

Transporting data over the Internet while quite affordable compared to other telecommunications technologies is also sensitive to issues of performance, availability (up time) and other considerations.

Utilizing technologies supported via its industry leading broadband subscriber management system (SMS), routing and security solutions supplied by Redback Networks, Cisco Systems and other vendors, RECOL can help customers build private Wide Area Networking (WAN) solutions. In these solutions, customer internal (Intranet) communications between locations does not touch the Internet. This provides several benefits including:

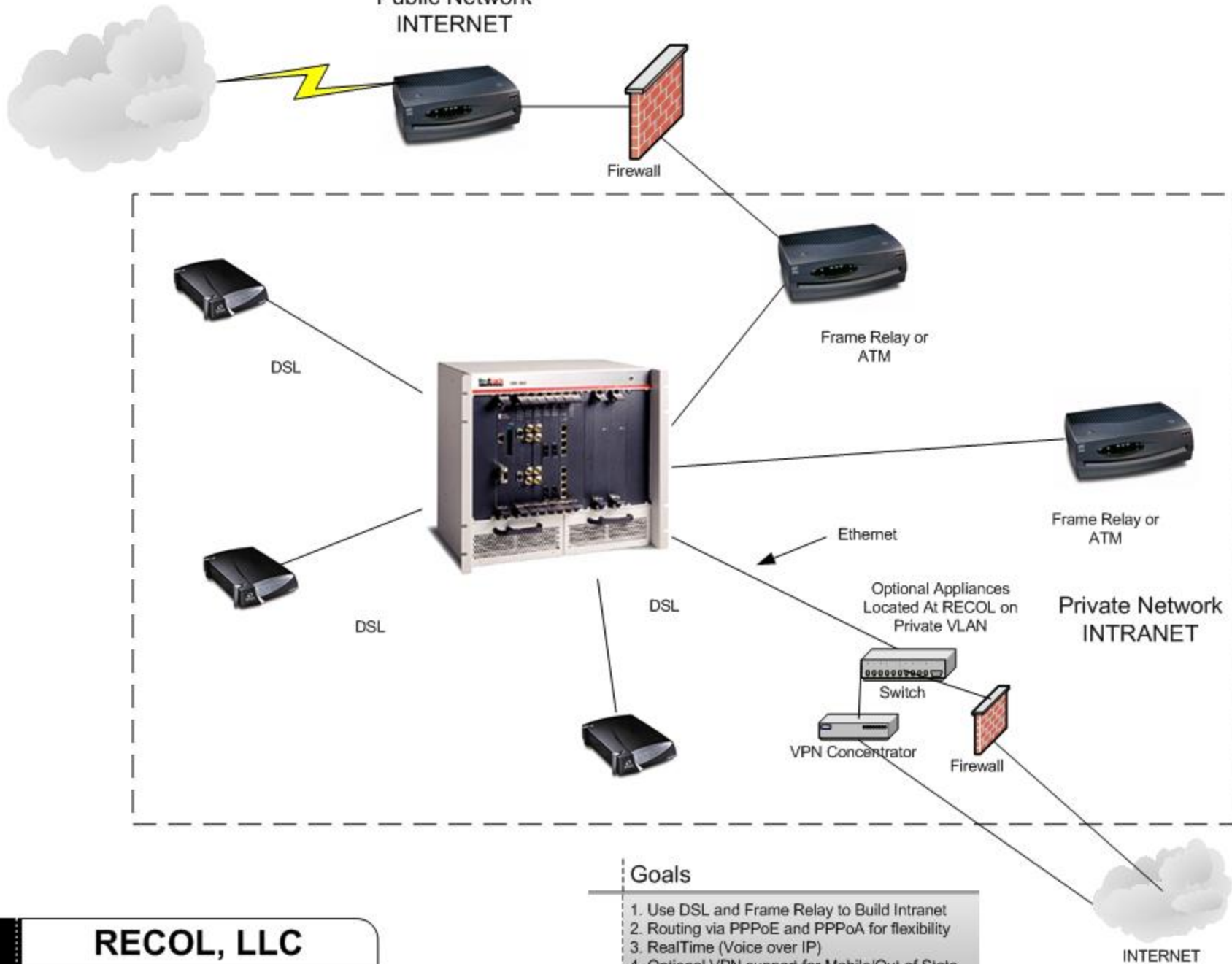
1. Secures Data
2. Reduces the impact of Internet traffic on network performance
3. Optimizes performance and reduces latency
4. Supports a single point of entry into the Internet.
5. Substantially reduces monthly telecommunications fees when compared to leased solutions such as T1 and Frame Relay.

Once a private network is built, there are several options for providing access to the Internet including leasing a high speed line from RECOL or co-locating security solutions such as a firewall or proxy server at RECOL's Network Operating Center.

For more information please contact:

Jerry Spignesi
RECOL, LLC
555 Long Wharf Drive
New Haven, CT 06511
Phone: 203.776.4874
Fax: 203.776.4943
solutions@recol.com
<http://www.recol.com>

Public Network INTERNET



RECOL, LLC

CONTEXT SAMPLE 7/26/2004

Goals

1. Use DSL and Frame Relay to Build Intranet
2. Routing via PPPoE and PPPoA for flexibility
3. RealTime (Voice over IP)
4. Optional VPN support for Mobile/Out of State
5. Optional Ethernet support for appliances
6. Costs savings compared to leased lines
7. SOHO, HQ, Remote Office